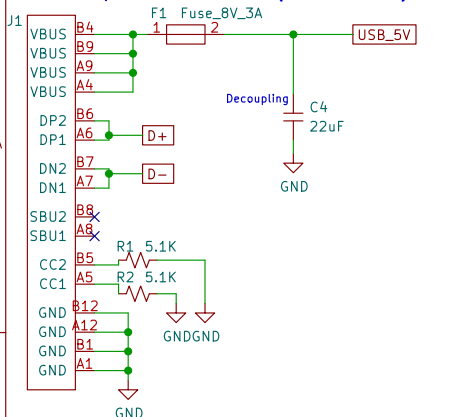
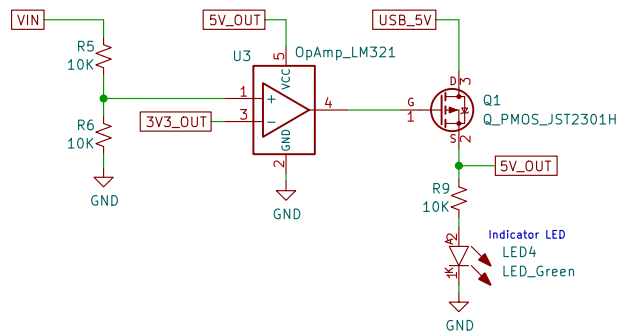


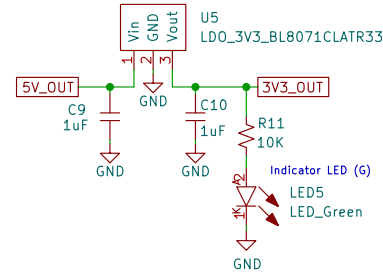
USB C Input – Power+Data (5V @ 3A max)



Automatic Power Selection (VIN OR USB)



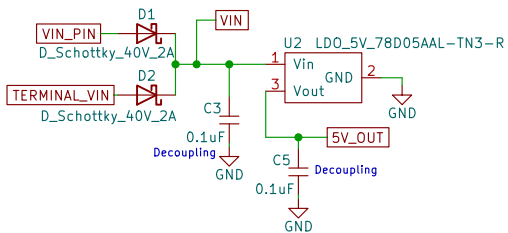
3V3 LDO (1.5A max / 500mV dropout / 6V Vin max)



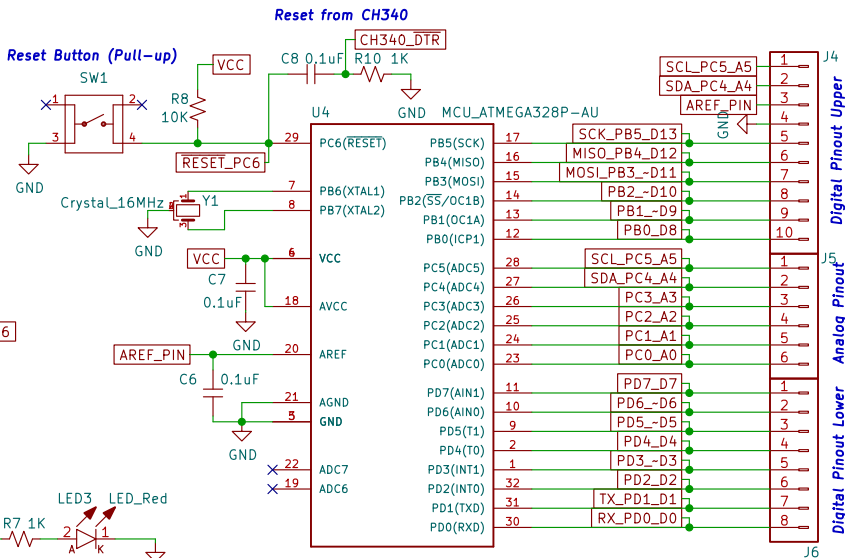
Mounting Screws (no connections – just for reference)

- H1 MountingHole_3.2mm_M3
- H2 MountingHole_3.2mm_M3
- H3 MountingHole_3.2mm_M3
- H4 MountingHole_3.2mm_M3

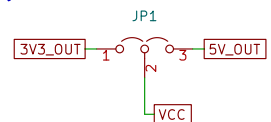
5V LDO (1.5A max / 2V dropout / 35V Vin max)



MCU – ATMEGA328P

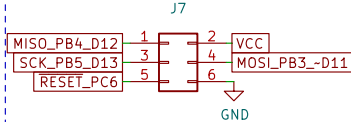


System VCC Source Selection Jumper

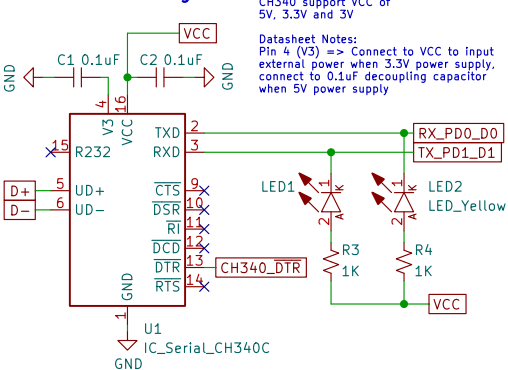


Note:
Sets the IO logic to 5V (recommended) or 3V3
At 3V3, max clock speed is about 14MHz

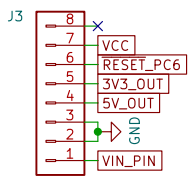
ICSP Pinout



USB-to-Serial Bridge



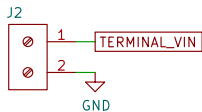
Power Pinout



Pin D13 LED



Screw Terminal Power Input



Khalid AlAwadhi
Remal IoT
Sheet: /
File: Nabd_v3_1.kicad_sch

Title: Nabd
Size: A4 Date: 2022-07-17
KiCad E.D.A. kicad (6.0.6)

Rev: v3.1
Id: 1/1